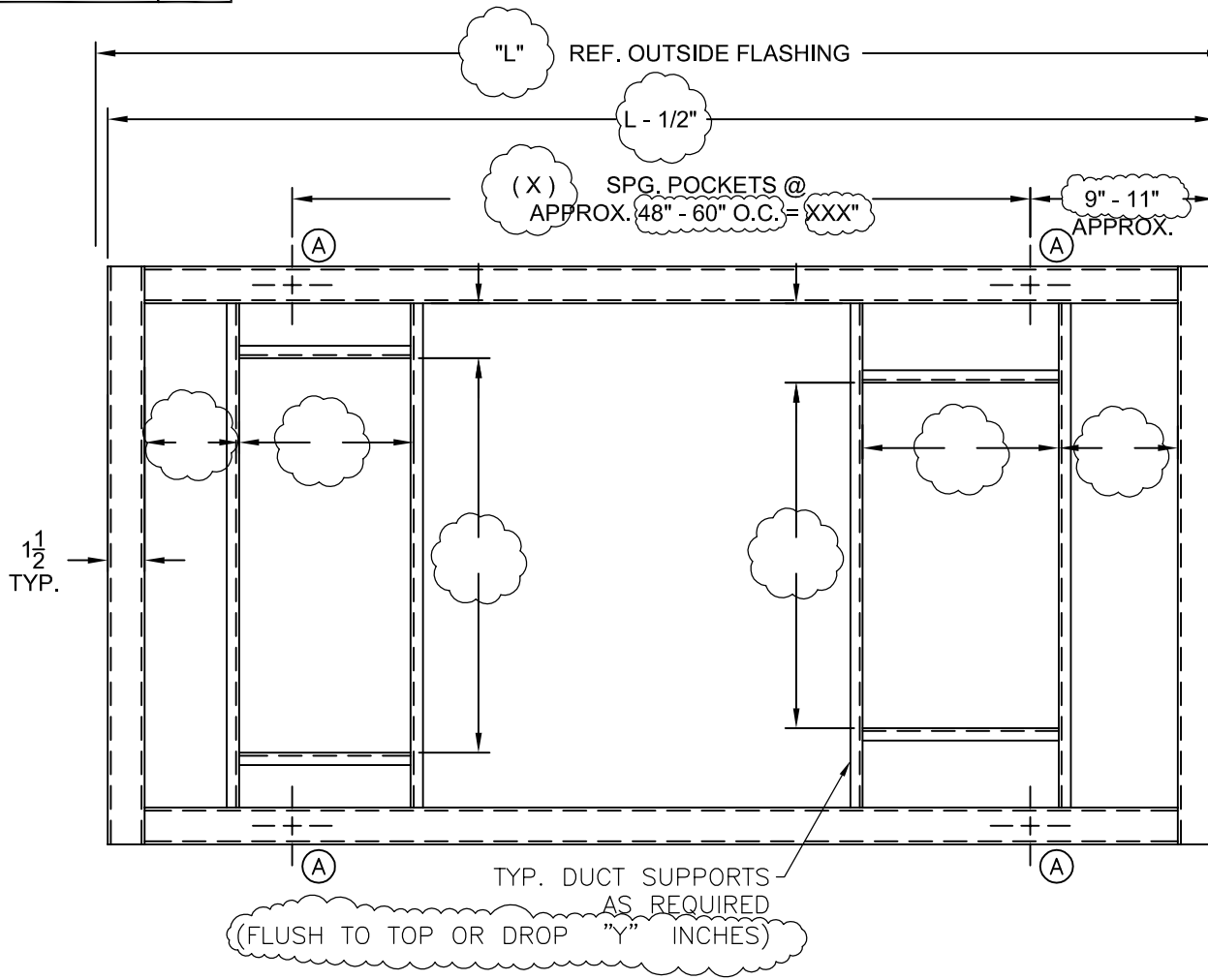


REV.	DESCRIPTION	DATE	BY



**CURB DATA**

TOTAL CURB WEIGHT: 16 LB/FT  
 QUANTITY: \_\_\_\_\_  
 SHIPPED IN 1 SECTION(S)  
 LOWER RAIL O.A. DIMENSIONS: (L+2) x (W+2)  
 CURB HEIGHT: 22"  
 CURB LINEAL FOOTAGE: (Lx2)+(Wx2)

SPRING POCKET LOCATION	SPRING IDENT. NO.	MAX. RATED LOAD PER POCKET	MAX. DEFL. (IN.)
A	T3Q-	XXX#	3.0

**OPTIONS**

YES NO  
  SEISMIC/WIND CONSIDERATION  
  SOUND BARRIER PKG.  
  CONDENSING UNIT RAIL PER DWG. NO. \_\_\_\_\_  
  DUCT SUPPORT PKG.

TYP. DUCT SUPPORTS AS REQUIRED (FLUSH TO TOP OR DROP "Y" INCHES)

TAG: \_\_\_\_\_  
 MANUFACTURER: \_\_\_\_\_  
 MODEL NUMBER: \_\_\_\_\_  
 OPERATING WEIGHT: \_\_\_\_\_

NOTE: ENGINEER REQUIRED TO FILL IN ALL VARIABLES PRIOR TO SUBMISSION. IF ANY VARIABLES ARE MISSING, MARK DWG AS "PRELIMINARY" AND SUBMIT. REMOVE BALLOONS AND THIS NOTE.

- NOTES:**
1. ROOFING AND INSULATION TO BE SUPPLIED BY OTHERS.
  2. OUTSIDE FLASHING DIMENSIONS OF CURB MATCH UNIT MANUFACTURERS CURB.
  3. SEE BULLETIN RC98 FOR TYPICAL INSTALLATION DETAILS AND ADJUSTMENT INSTRUCTIONS.
  4. FOR MANUFACTURING DETAILS, REFERENCE SUBSEQUENT DRAWING SHEETS.
- OTHER MATERIALS, COMPOUNDS, OR FINISHES WITH EQUAL OR SUPERIOR PROPERTIES MAY BE SUBSTITUTED AS THEY BECOME AVAILABLE.

**CERTIFIED FOR:**

JOB NAME: \_\_\_\_\_  
 CUSTOMER : \_\_\_\_\_  
 CUSTOMER P.O.: \_\_\_\_\_  
 SALES ORDER: \_\_\_\_\_

**MODEL P 6300 ISOLATED SEISMIC WIND RESTRAINT ROOF CURB**



SCALE: **NONE**

SHEET: \_\_\_\_\_

DRAWING NO.: **VMA-** \_\_\_\_\_

REVISION: \_\_\_\_\_

*Member*  
**VISCMA**